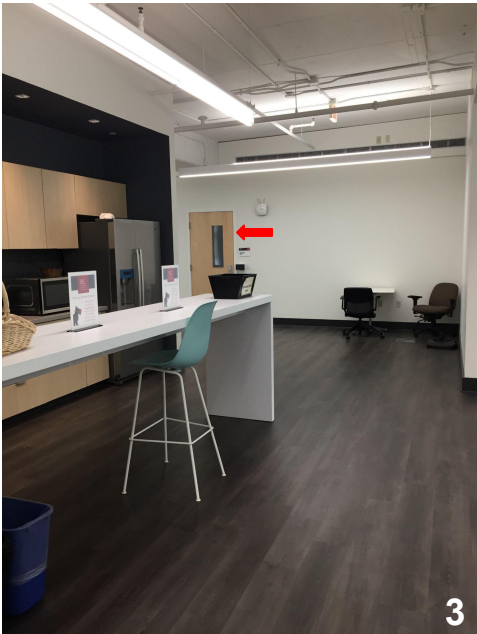
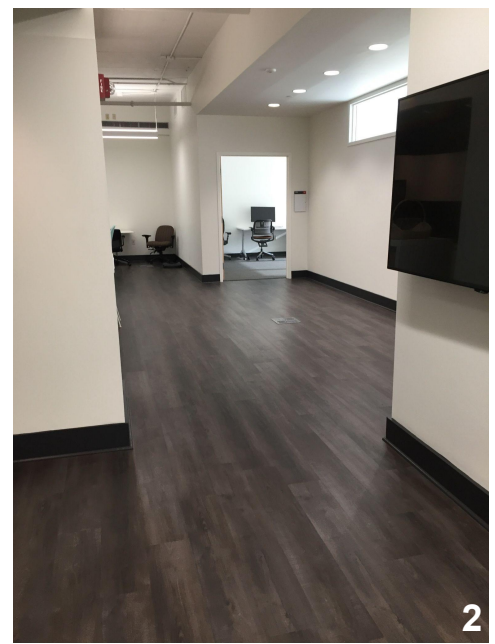


Enter the ECE door near the elevators on the 4th Floor of the RMCIC (CIC) Bldg. The Panther Hollow Conference Room (Room 4105) is to the left after you have entered that area. You can see the main entrance to that room in Picture 3 shown below.



This is the view as you enter the 4th floor area. Turn left; continue past the kitchen, and you will see the door to the Panther Hollow Conference Room (4105). A red arrow to that door is shown below in Picture 3 and is the door in Picture 4.

**ALTERNATIVE 2ND ENTRANCE**

There is an additional entrance to this room if you are running late. The pictures in the last row of this flyer show that path.

- Go past the front-entrance door to the conference room (shown to the left of this text box and in Picture 3).
- Turn right past the main entrance to the conference room.
- Walk toward the window.
- The door (blue arrow shown below) is at the end of the conference room wall.

The red arrow shows the door to the conference room. Any amenities you see are **only** for floor residents please.

If you are on time, please fill in the front seats and space yourselves apart if possible to comply with Covid mitigations.



Again, if you are running late, while it is ok to use the main entrance shown by the red arrow, you will be entering very close to the speaker. There is a second entrance around the corner from the room, near the window, as shown in these pictures (blue arrow). Hopefully all of the attendees have taken a seat so they are not blocking this entrance.